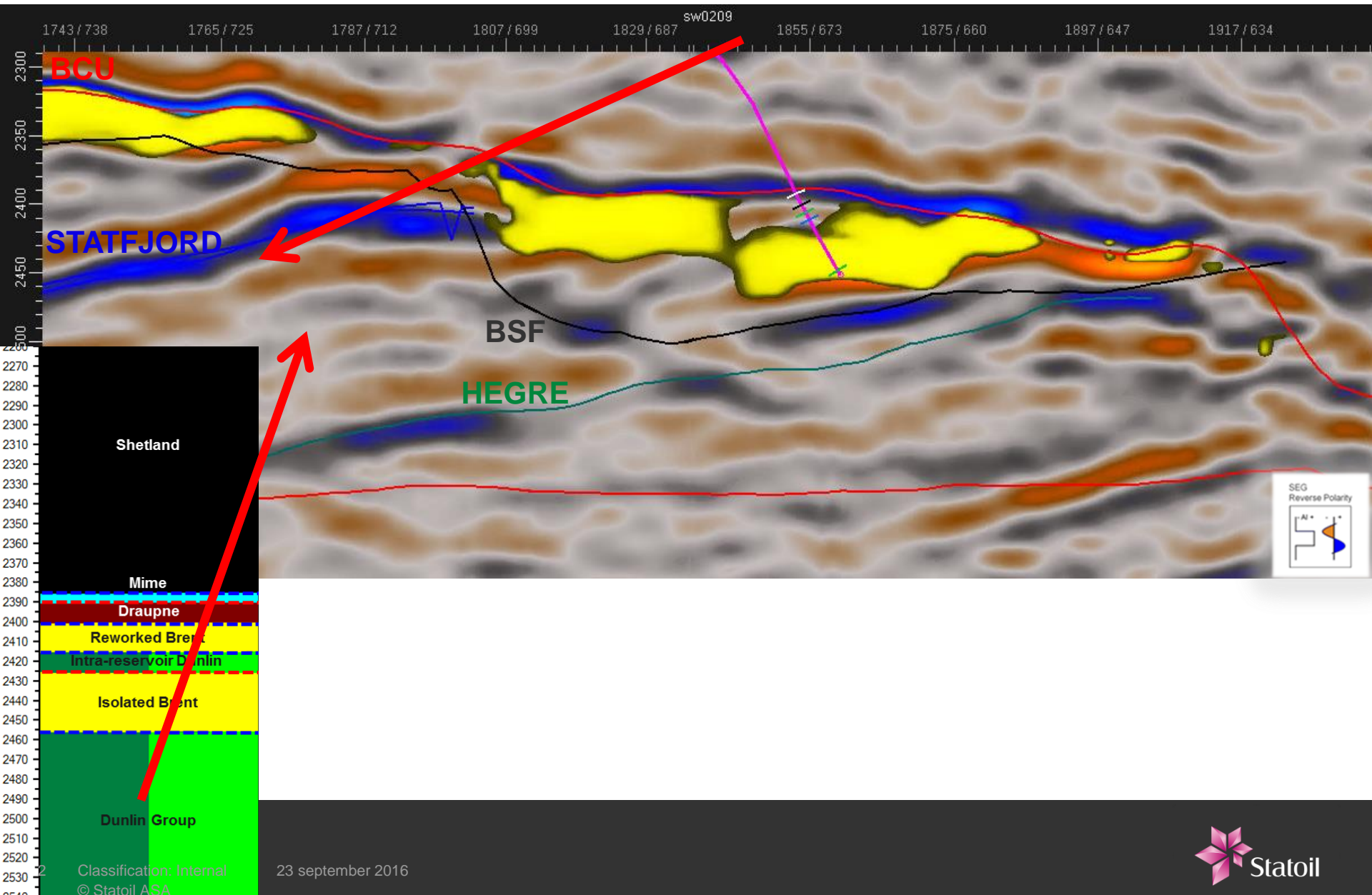


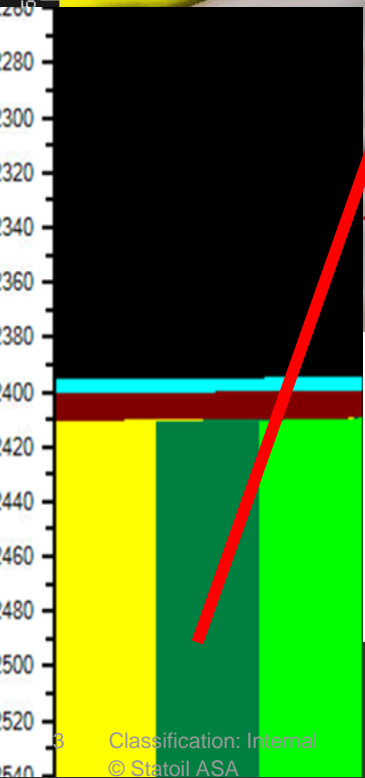
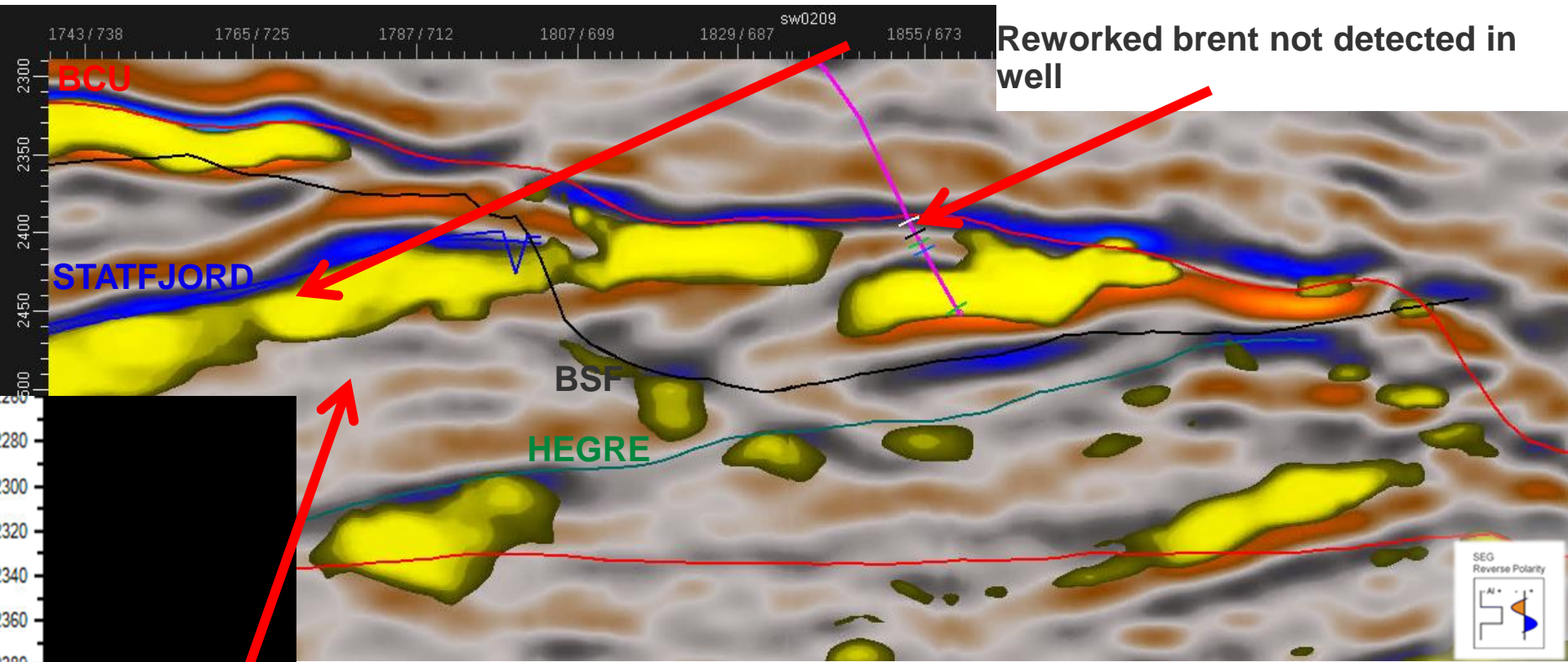
# Slides shown at the Force meeting 17.11.2016 in addition to the NPF presentation

- Øyvind Skjæveland, Statoil, 16/11-16

# Detailed look at result in a Statfjord well. Inversion cannot predict Statfjord sand – BG model does not allow it.



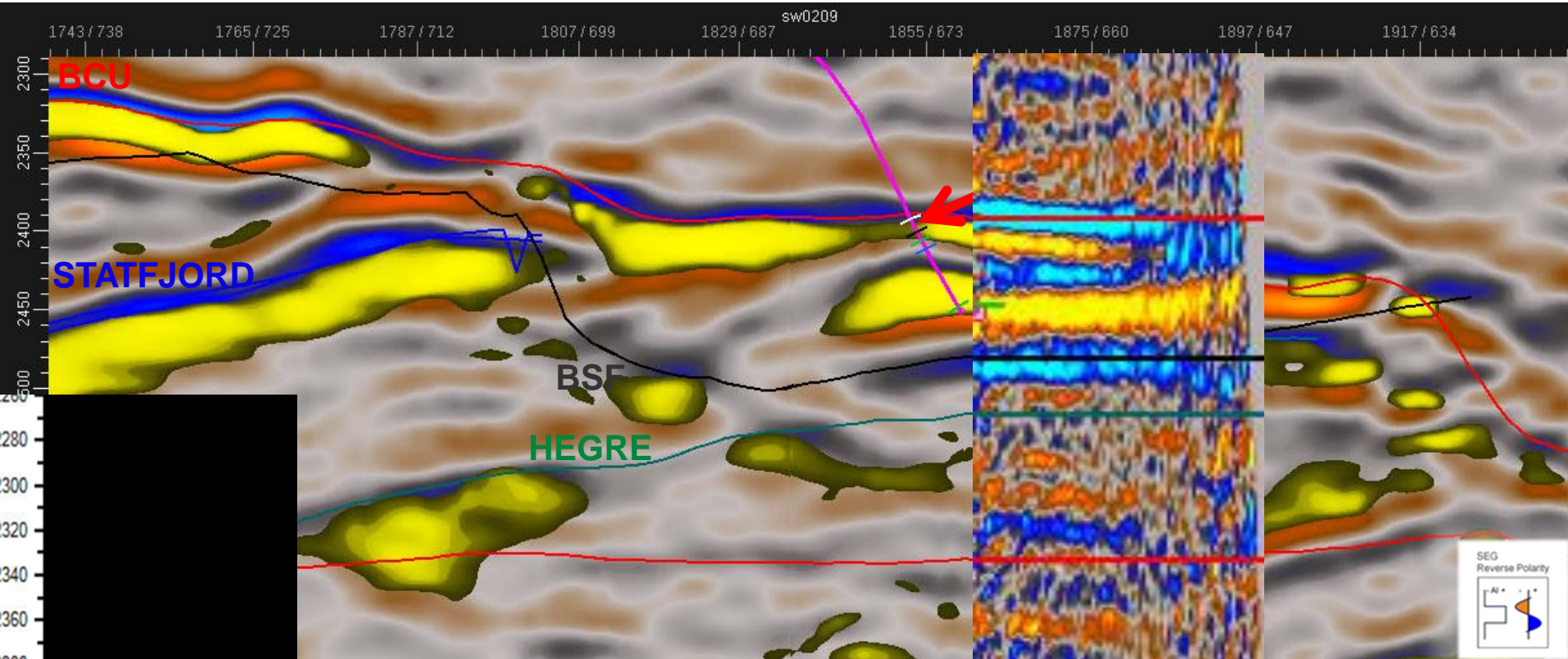
# Detailed look at result in B-11D well. More open background model. Statfjord sand detected.



Isolated Brent not defined by horizons. No Isolated Brent output horizons



# Detailed look at result in B-11D well. Open background model. Near and Mid only (Far dropped)

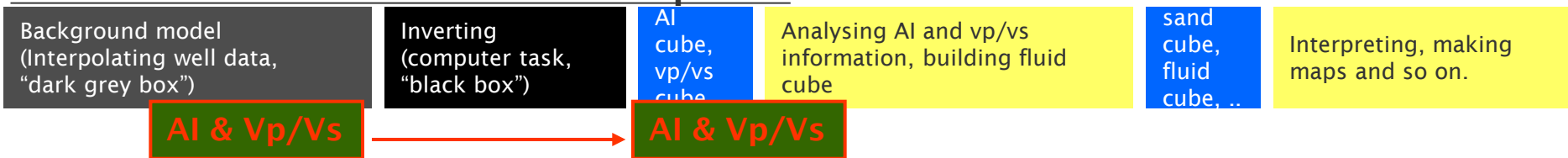


Reworked Brent also detected. Far stack has data quality issues here. Important to have input data at hand.

# What makes Pcube special

- Uses geological knowledge in a very direct way.
  - By building a background model with explicit facies.
- Output is ready to use.
  - You get a oil cube, brine cube, shale cube, .. directly.
  - No need to “massage” inversion result to get e.g. sand cube.

## “Classical inversion” workflow - simplified



## Pcube workflow - simplified

